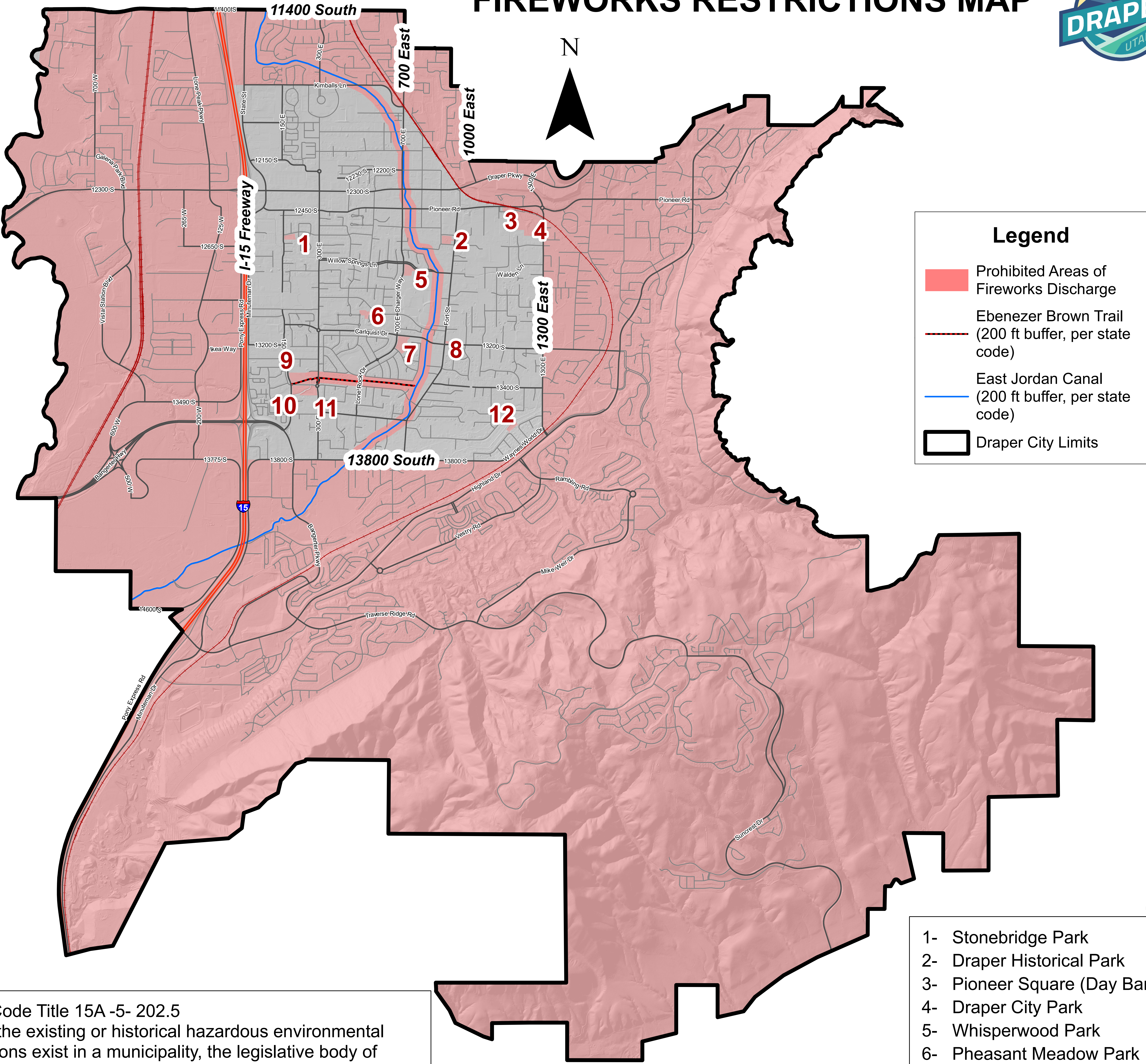


# FIREWORKS RESTRICTIONS MAP



Utah Code Title 15A -5- 202.5  
1.1. If the existing or historical hazardous environmental conditions exist in a municipality, the legislative body of the municipality may prohibit the ignition or use of an ignition source in:  
1.1.2. within 200 feet of waterways, trails, canyons, washes, ravines, or similar areas;  
1.1.4. a limited area outside the hazardous areas described in this paragraph 1.1 to facilitate a readily identifiable closed area, in accordance with paragraph 2.

- 1- Stonebridge Park
- 2- Draper Historical Park
- 3- Pioneer Square (Day Barn)
- 4- Draper City Park
- 5- Whisperwood Park
- 6- Pheasant Meadow Park
- 7- Bellevue Park
- 8- Ballard Corner Memorial Park
- 9- Smith Fields Park
- 10- Dayland Dog Park
- 11- Smith Fields Splash Pad
- 12- Meadowlark Park